

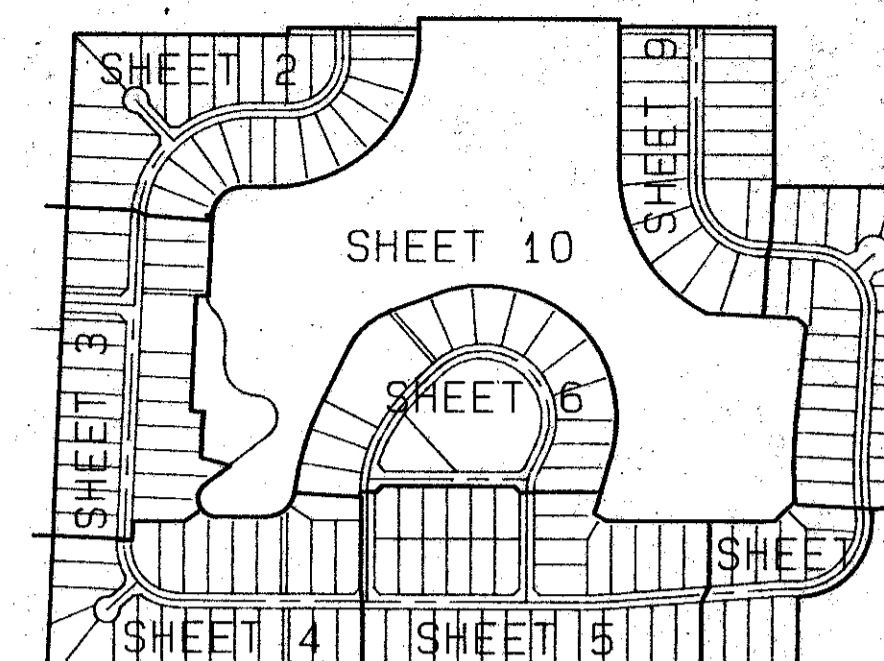
LEGEND LAKE ESTATES

A REPLAT OF A PORTION OF "THE HUNT", P. U. D., PLAT BOOK 32, PAGES 119 THOUGH 125
SITUATE IN SECTION 30 AND 31, TOWNSHIP 44 SOUTH, RANGE 42 EAST,
PALM BEACH COUNTY, FLORIDA.

JANUARY, 1992

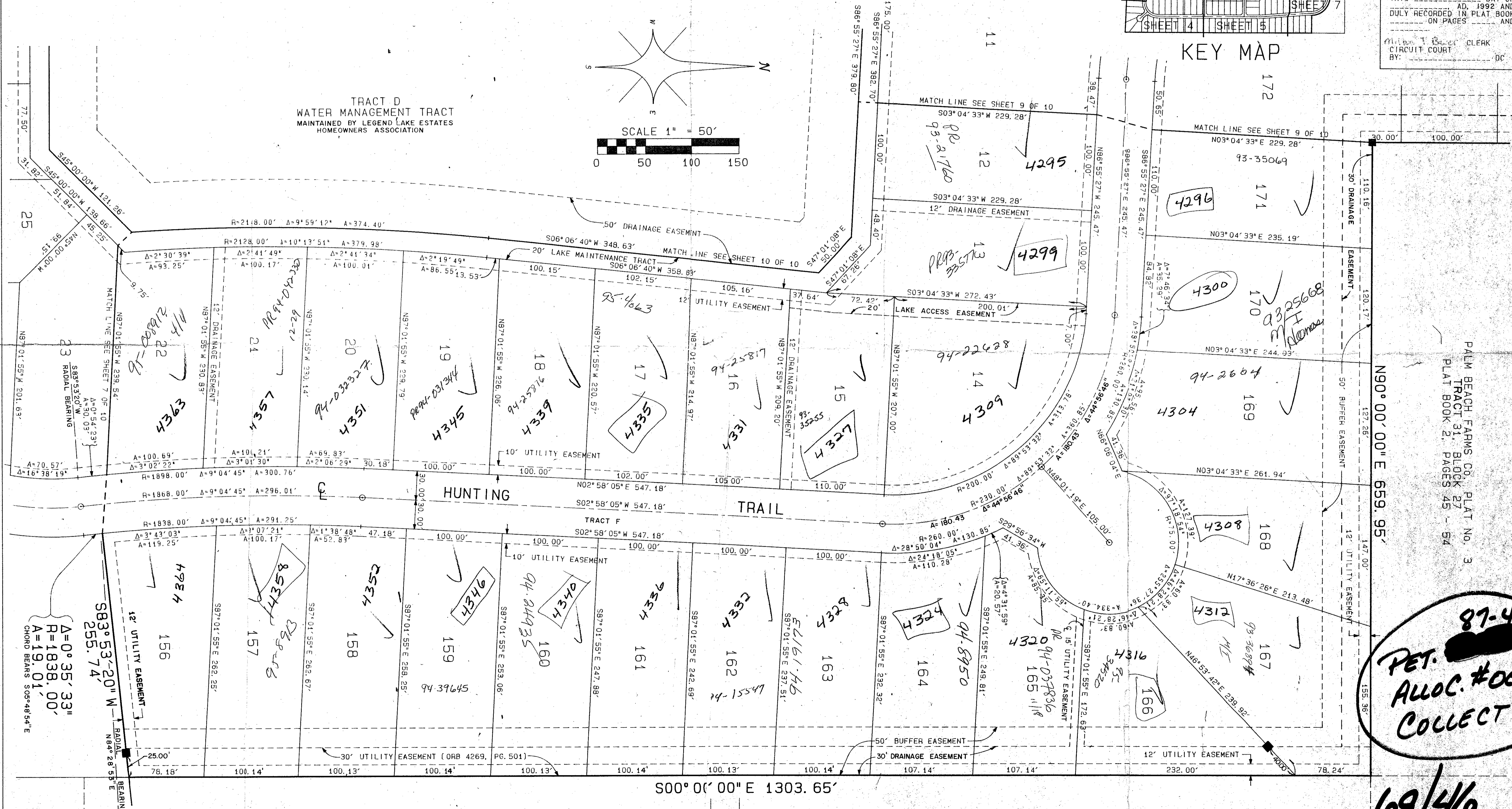
SHEET 8 OF 10

0467-001

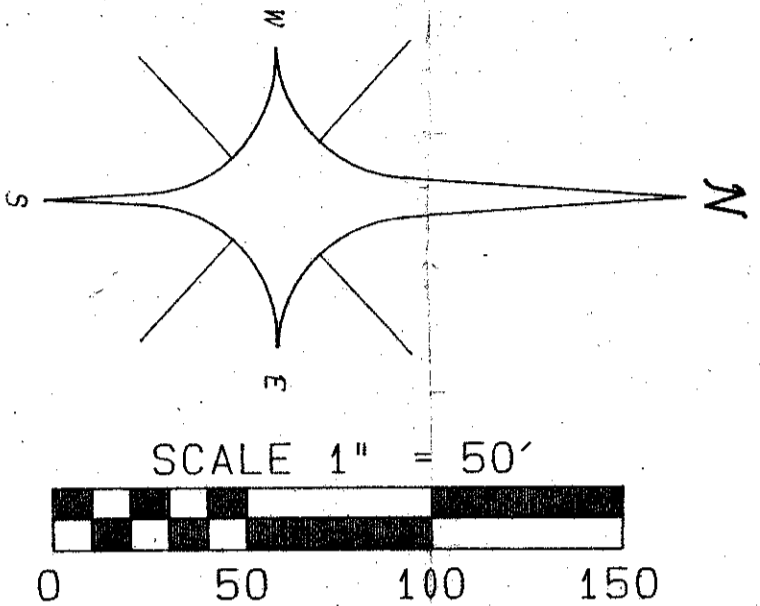


STATE OF FLORIDA)
COUNTY OF PALM BEACH) SS
THIS PLAT WAS FILED FOR
RECORD AT _____ DAY OF
_____ AD, 1992 AND
DULY RECORDED IN PLAT BOOK
_____ ON PAGES _____ AND

CIRCUIT COURT
BY: _____ DC



TRACT D
WATER MANAGEMENT TRACT
MAINTAINED BY LEGEND LAKE ESTATES
HOMEOWNERS ASSOCIATION



KEY MAP

PALM BEACH FARMS CO. PLAT No. 3
TRACT 31, BLOCK 27
PLAT BOOK 2, PAGES 45 - 54

87-4
PET. [redacted]
ALLOC. #0001
COLLECT

69/46

SUBDIVISION * LEGEND LAKE ESTATES
BOOK 6A
PAGE 46
FLOOD ZONE 0
QUAD * 4B
SE
PLAT NAME THE HUNT
ZIP CODE 33447

PALM BEACH FARMS Co. PLAT No. 3
TRACT 44, BLOCK 27
PLAT BOOK 2, PAGES 45 - 54

PALM BEACH FARMS Co. PLAT No. 3
TRACT 41, BLOCK 27
PLAT BOOK 2, PAGES 45 - 54

ATLANTIC - CARIBBEAN MAPPING, INC.
PROFESSIONAL LAND SURVEYORS
1860 OLD OKEECHOBEE ROAD
WEST PALM BEACH, FLORIDA 33409
(407) 833-2000 FAX (407) 837-5887
90181 LEGEND LAKE ESTATES
RECORD PLAT

RTSIPRO

0467-001